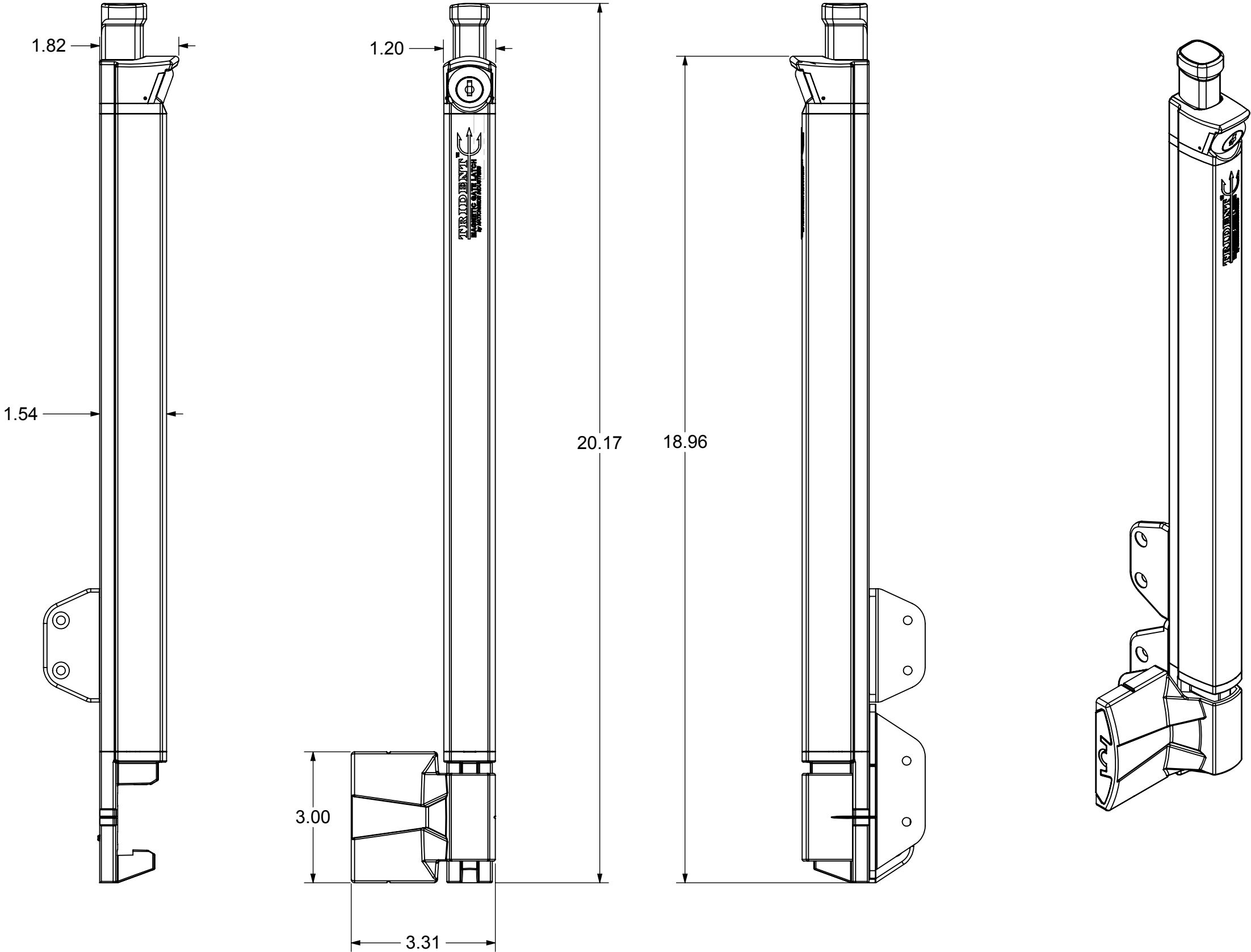
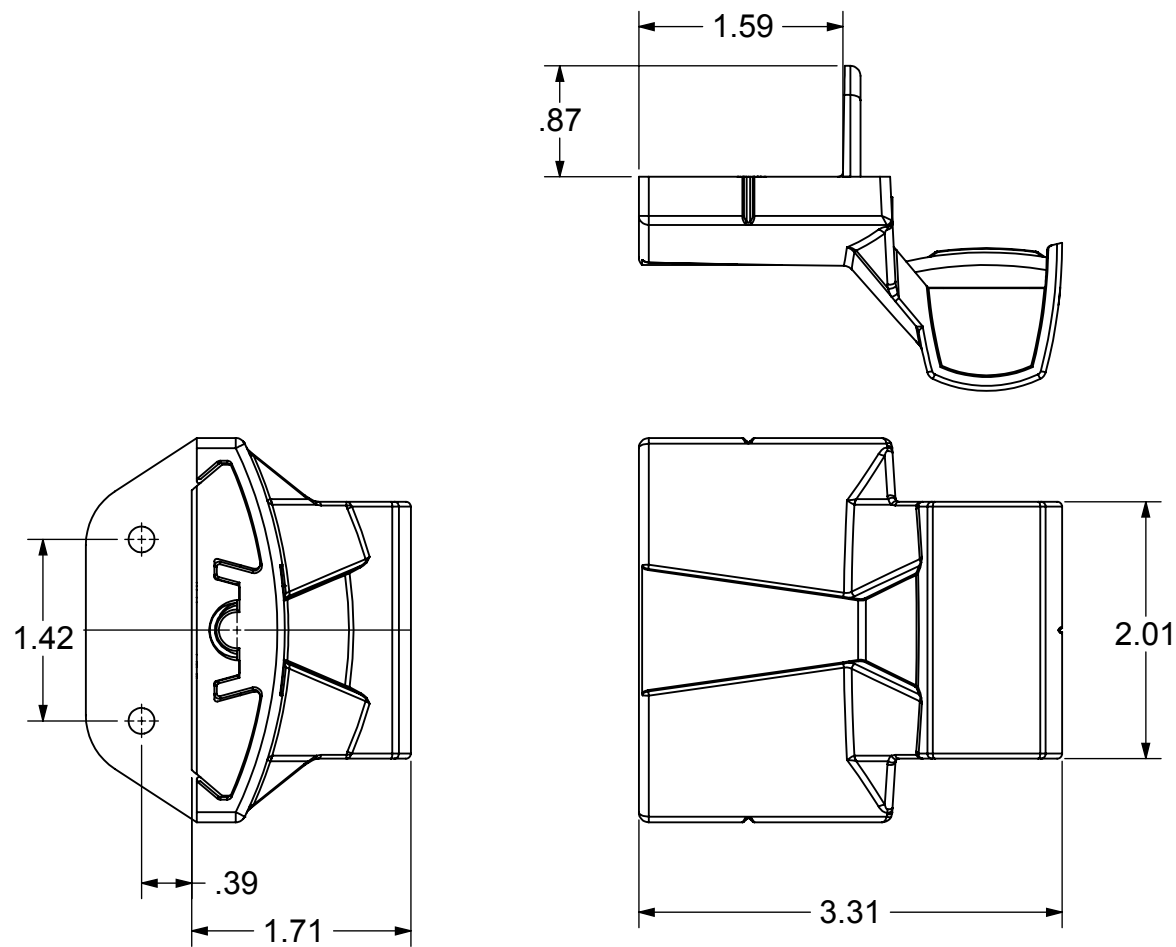


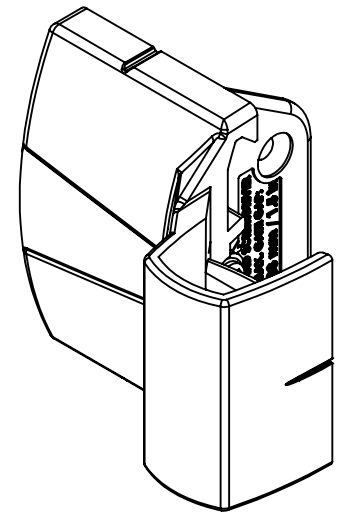
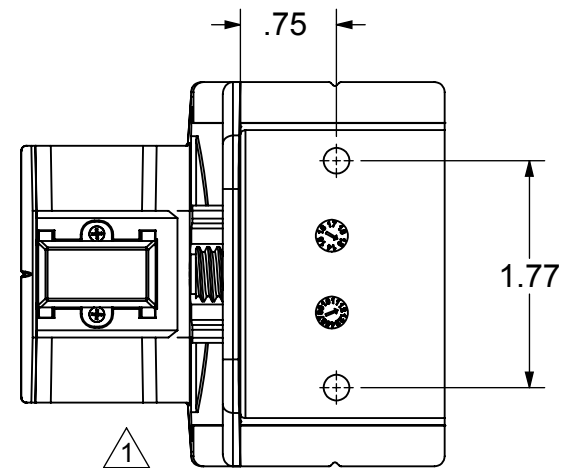
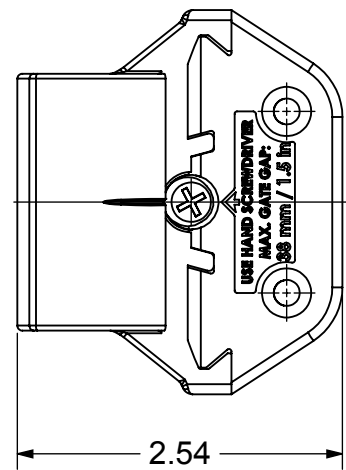
PART #	COLOR
TRIDENT20-BK	BLACK
TRIDENT20-WH	WHITE

REVISIONS		DATE	APPD
ECR/DCR	REV.	DESCRIPTION	
-	-	INITIAL RELEASE	-
-	1	REVISED KEEPER MAGNET COVER AND DATE INSERT	-

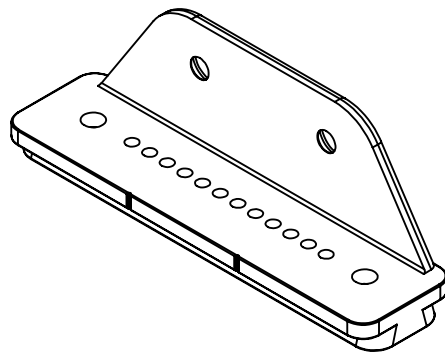
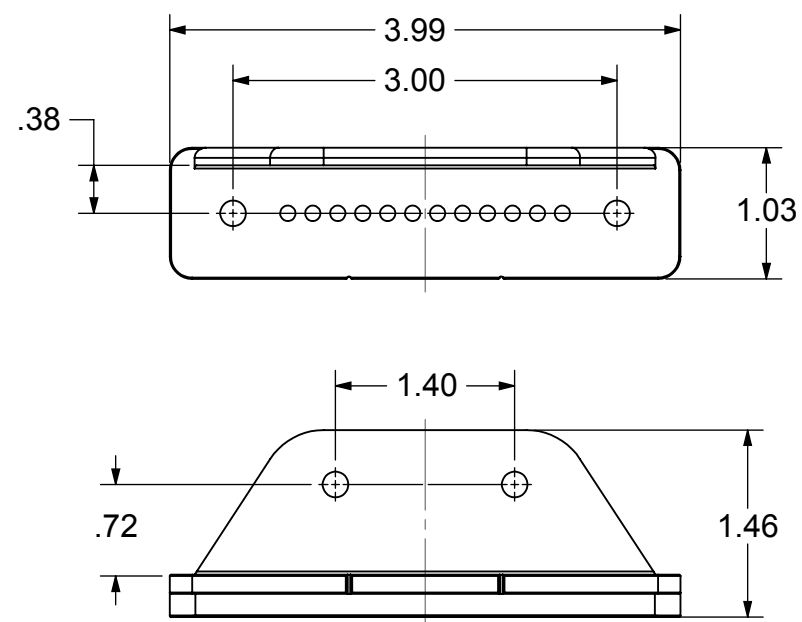




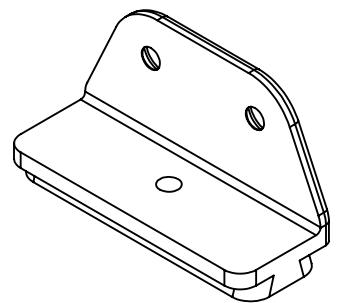
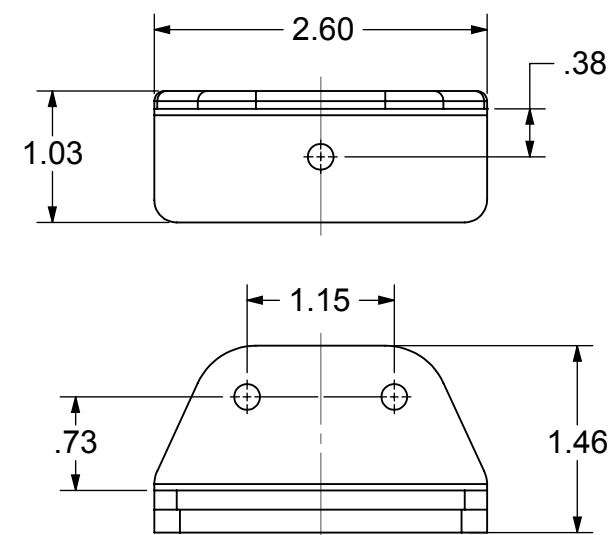
KEEPER



LOWER MOUNTING BRACKET



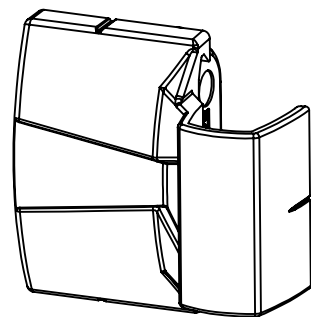
UPPER MOUNTING BRACKET



PROPRIETARY AND CONFIDENTIAL
THE INFORMATION CONTAINED IN THIS DRAWING IS
THE SOLE PROPERTY OF NATIONWIDE INDUSTRIES. ANY
REPRODUCTION IN PART OR AS A WHOLE WITHOUT THE
WRITTEN PERMISSION OF NATIONWIDE INDUSTRIES
IS STRICTLY PROHIBITED.
DO NOT SCALE DRAWING

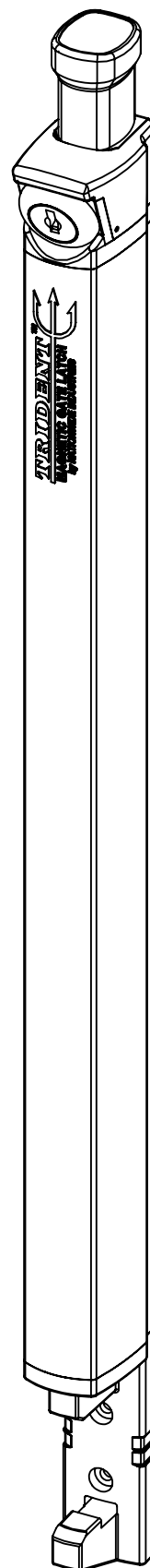
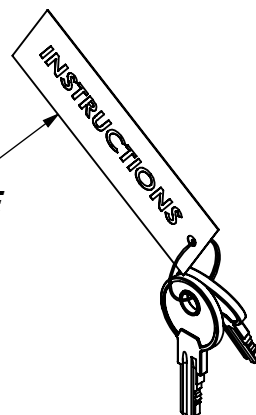
**TOP PULL
LATCH ASSEMBLY
OUTLINE & DIMENSIONS**

SIZE	DWG. NO.	REV.
B	CS--TRIDENT20	1
SCALE:2:3	WEIGHT:	SHEET 2 OF 3



(1) STRIKER ASSEMBLY

KEY TAG
NON-TEARABLE
PAPER



(1) LATCH ASSEMBLY with KEY

TRIDENT20

PACKAGING INSTRUCTIONS:

1) POLY-BAG MOUNTING SCREW KIT

KIT CONTAINS:

(11) #10 x .75" SELF-DRILLING PHILIPS FLAT HD SCREWS

(1) #8 x .38" PHILIPS FLAT HD SCREW

(1) UPPER MOUNTING BRACKET

(1) LOWER MOUNTING BRACKET

2) "Trident" PRINTED POLY-BAG:

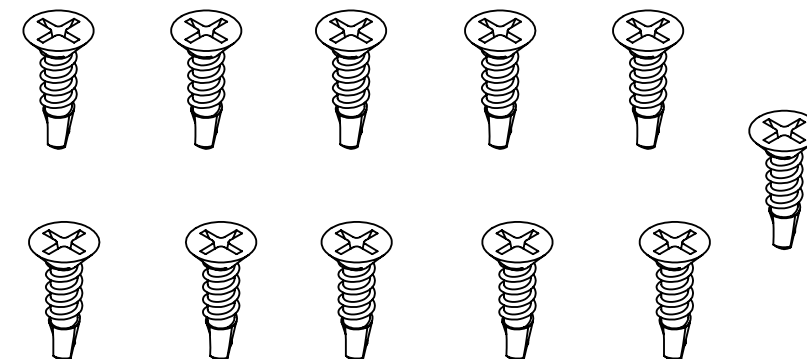
(1) TOP PULL LATCH ASSEMBLY

(1) STRIKER ASSEMBLY

(1) MOUNTING SCREW KIT

(1) "Nationwide" INSTRUCTION SHEET

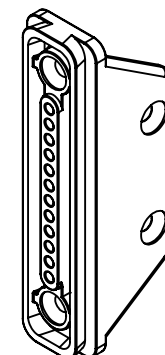
(1) WARRANTY SHEET



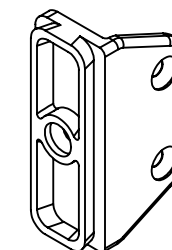
(11) #10 x .75" SELF-DRILLING PHILIPS FLAT HD SCREW
MAT'L: 18-8 STAINLESS STEEL
FINISH: PAINT TO MATCH LATCH



(1) #8 x .38" PHILIPS FLAT HD SCREW
MAT'L: 18-8 STAINLESS STEEL
FINISH: PAINT TO MATCH LATCH



(1) LOWER MOUNTING BRACKET



(1) UPPER MOUNTING BRACKET

TOP PULL
LATCH ASSEMBLY
OUTLINE & DIMENSIONS
CS--TRIDENT20
1.762 LB.