

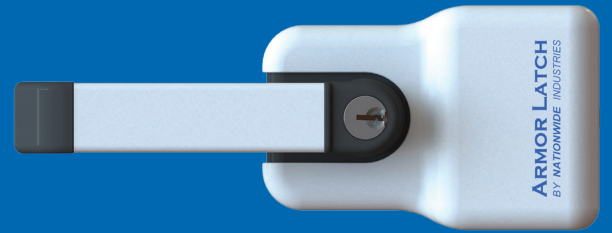
PATENTED

# ARMOR LATCH®

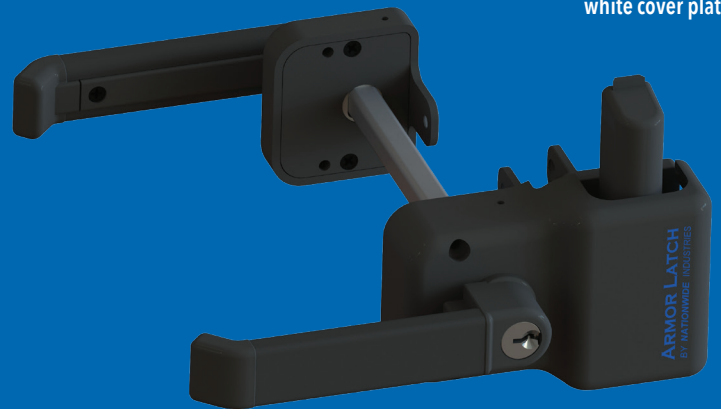
## MAGNETIC LEVER HANDLE LATCH

The Armor Latch® offers great choices to improve the look and performance of any gate. Made of glass-filled nylon material for low maintenance, with a strong look and feel.

- Locks and unlocks from either side
- Aluminum cover plates for metal look and color
- Re-keyable to home locks
- Reversible for left and right handed use
- Easy installation including horizontal and vertical adjustability
- Works with double drive gates
- Fits gate frames from 1-1/2" to 5" deep



Shown with white cover plate



PART NUMBER	DESCRIPTION	COLOR	COUNT	CASE WEIGHT (LBS)
NW6244-SD-FB	Flat Black w/self-drilling stainless steel screws	Black	10 (PB)	21
NW6244-SD-BK-KA	Flat Black w/self-drilling stainless steel screws, keyed alike	Black	10 (PB)	21
NW6244CV-MI	Cover Plates Glossy Unpainted	N/A	10 (PB)	6
NW6244CV-WH	Cover Plates Glossy White	White	10 (PB)	6
NW6244CV-BZ	Cover Plates Glossy Bronze	Bronze	10 (PB)	6